

EOCR-SSD Schneider Electric

Digital Type Standard Over-current Relay with Ammeter

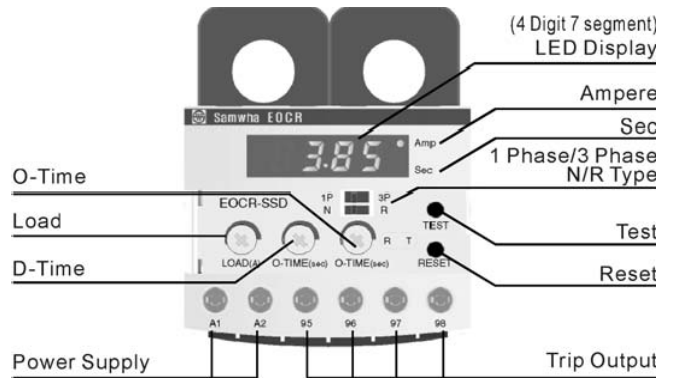
Introduction

Protection functions

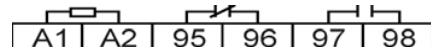
| Protection | Operation time | Condition |
|--------------|---|---|
| Over current | Preset O-Time | |
| Phase-loss | In 3 sec | |
| Locked Rotor | Within 0.5sec after preset D-time elapsed | In case that OC keeps more than 200% after D-time elapsed |

- Over-current range ; 05Type : 0.5~6A
30Type : 3A~30A
60Type : 10A~60A
- Indicates Trip cause
- manual(instant)/ electrical(remote) Reset
- Singlephase(1P) / Three phase(3P) Selectable
- Relay Output selectable – Fail safe(N) / Non-fail safe(R)

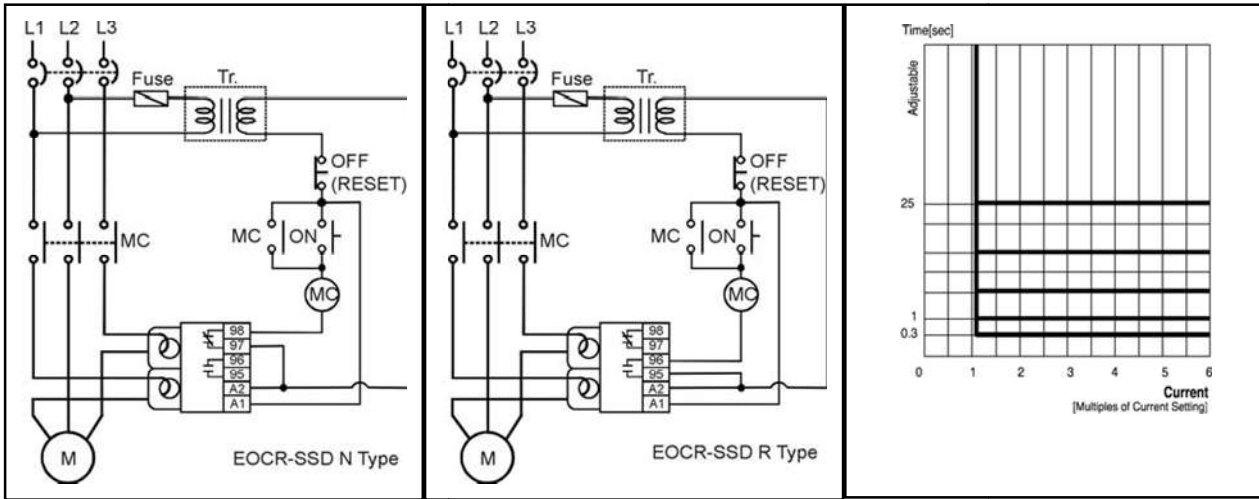
Feature



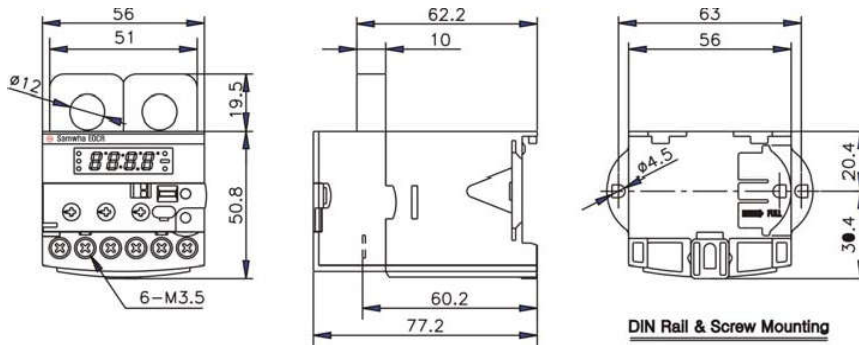
※Terminal Diagram



Typical Diagram



Dimension

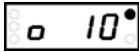
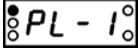
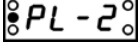
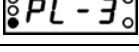
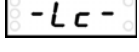


1 Definite-Time Characteristic of OC

■ Specification

| | | | | | | |
|--|----------------------------|-----------|---|-----|------|---------|
| Current Setting range | Over-current | 05 | 0.5~6A | | | |
| | | 30 | 3~30A | | | |
| | | 60 | 10~60A | | | |
| | Starting Delay time | D-time | 1~30sec | | | |
| | Operating Delay time | O-time | 0.5/1~10sec | | | |
| Reset | | | Manual (instant) / electrical Reset | | | |
| Operating time Characteristic | Over current | | Definite time | | | |
| Tolerance | | | Current | ±5% | Time | ±0.2sec |
| Environment | Temperature | Operation | -20□~60□ | | | |
| | | Storage | -30□~80□ | | | |
| | Humidity | | 30~85% RH Non-Condensing | | | |
| Power supply | | | · 220 : 220VAC±15%,50/60Hz · 110 : 110VAC±15%,50/60Hz · 24 : 24VAC/DC | | | |
| Output Relay | 2-SPST(1a1b) | | 3A/250VAC, Resistive | | | |
| Insulation | Between casing and circuit | | 10MΩ, 500VDC | | | |
| Dielectric Strength | Between Casing & Circuits | | 2.0kV 60Hz, 1min | | | |
| | Between Contacts | | 1.0kV 60Hz, 1min | | | |
| | Between Circuits | | 2.0kV 60Hz, 1min | | | |
| Mounting | | | 35mm Din Rail or Panel Mounting | | | |
| Power Consumption | | | Less than 3W | | | |
| Electrostatic Discharge | IEC61000-4-2 | | Level 3 : Air Discharge : ±8kV, Contact Discharge : ±6kV | | | |
| Radiated Electromagnetic Field Disturbance | IEC61000-4-3 | | Level 3 : 10V/m, 150MHz & 450MHz Portable transceiver | | | |
| EFT/Burst | IEC61000-4-4 | | Level 3 : ±2kV, 1min | | | |
| Surge | IEC61000-4-5 | | Level 3 : 1.2X50μs, ±4kV(0°,90°,180°,270°) | | | |
| 1MHz Burst disturbance | IEC61000-4-12 | | Level 3 : 2.5kV, 1MHz | | | |
| Conducted Emission | IEC60255-25 | | Class A (Conducted & Radiated) | | | |

■ Tripdisplay

| Trip Cause | LED Indication | Description |
|--------------|---|--|
| Over Current |  | Tripped after sensing over-current 10A during operation. |
| Phase Loss |  | Phase loss of L1(R) |
| |  | Phase loss of L2(S) |
| |  | Phase loss of L3(T) |
| Locked Rotor |  | Tripped after sensing Locked Rotor during starting. |

How to set

Please Set before motor starting below.

- 1) Over-current : Set the rated motor current of its name plate . For protection of connected machinery with motor, it is recommended to set the 110~115% of real running current after motor current is stabilized.
- 2) Starting Delay Time : Set the expected run-up time of motor by D-time Knob
- 3) Operating Time : Set trip delay time(O-time knob) to desired triptime.

| Order | Item | Setting range | FND | DESCRIPTION |
|-------|-----------------------------|---|--------------------------------------|--|
| 1 | Over-current Setting | 05 Type : 0.5A~6A 30 Type : 3~30A 60 Type : 10A~60A | | · Able to set current, preset, operating 0.5A. 60A : set by step of 0.1A, 30A : set by step of 1A 60A : set by step of 1A |
| 2 | Starting delay time Setting | 0.5 ~ 30 sec | | |
| 3 | Operating Timedelay Setting | 0.5 ~ 30 sec | | |
| 4 | TEST | Display END after elapsing 3sec+preset O-time | Cannot do a test during driving. | |

Ordering

| | | | | | | | | | | | | | |
|------------|---|---|---|---|---|---|---|---|---|---|-----------|---|-----------|
| Model name | | | | | | | | 1 | 2 | 3 | Accessory | | |
| E | O | C | R | S | S | D | - | 0 | 5 | M | 7 | B | 2CT-D-100 |

| | 1 | | 2 | | 3 | | | |
|----------------------|---------------|-----------|--------------|----------|-----------|----------|------------------------------------|----------|
| | Current Range | | Power supply | | Frequency | Mounting | | |
| EOCRSSD-05M7B | 05 Type | 05 | 220VAC | M | 50/60Hz | 7 | P/D Both P: Panel D: DinRail | B |
| EOCRSSD-30M7B | 30 Type | 30 | | | | | | |
| EOCRSSD-60M7B | 60 Type | 60 | | | | | | |
| EOCRSSD-05F7B | 05 Type | 05 | 110VAC | F | | | | |
| EOCRSSD-30F7B | 30 Type | 30 | | | | | | |
| EOCRSSD-60F7B | 60 Type | 60 | | | | | | |
| EOCRSSD-05B7B | 05 Type | 05 | 24VAC/DC | B | | | | |
| EOCRSSD-30B7B | 30 Type | 30 | | | | | | |
| EOCRSSD-60B7B | 60 Type | 60 | | | | | | |

| | |
|-------|-----------|
| 100:5 | D1 |
| 150:5 | DH |
| 200:5 | D2 |
| 300:5 | D3 |
| 400:5 | D4 |

※ In case of combination with external CT
Ring CT Type inscribes like as R1, RH, R2...R4
SRCT Type inscribes like as S1, SH, S2..S4

Accessory

| 2CT | | | | Ratio | RCT | | | Ratio | SRCT | | | | Ratio |
|-----------|-----|---|---|-------|-----|---|-----|-------|------|---|-----|---|-------|
| 2CT-D-100 | 2CT | - | D | - | RCT | - | RCT | 100:5 | SR | - | 2CT | - | 100:5 |
| 2CT-D-150 | | | | | | | | 150:5 | | | | | 150:5 |
| 2CT-D-200 | | | | | | | | 200:5 | | | | | 200:5 |
| 2CT-D-300 | | | | | | | | 300:5 | | | | | 300:5 |
| 2CT-D-400 | | | | | | | | 400:5 | | | | | 400:5 |



HOANG PHUONG ELECTRIC

CÔNG TY CỔ PHẦN THIẾT BỊ ĐIỆN HOÀNG PHƯƠNG

ĐC : Số 10, ngõ 44, phố Võ Thị Sáu, P. Thanh Nhân, Q.Hai Bà Trưng, HN

Tel : 024.3215.1322

Email : Codienhoangphuong@gmail.com

Website : Hoangphuongjsc.com

0944.240.317

0961.008.858

0975.123.698