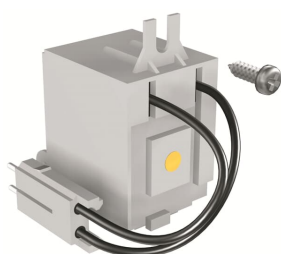


PRODUCT-DETAILS

SOR-C T4-T5-T6 24...30 Vac/dc

SOR-C T4-T5-T6 24...30 Vac/dc



General Information

| | |
|-----------------------|---|
| Extended Product Type | SOR-C T4-T5-T6 24...30 Vac/dc |
| Product ID | 1SDA054870R1 |
| EAN | 8015644559984 |
| Catalog Description | SOR-C T4-T5-T6 24...30 Vac/dc |
| Long Description | SHUNT OPENING RELEASE WIRED 24...30V AC-DC T4-T5-T6 |

Ordering

| | |
|------------------------|---------------|
| E-Number (Finland) | 3655621 |
| EAN | 8015644559984 |
| Minimum Order Quantity | 1 piece |
| Customs Tariff Number | 85389099 |

Dimensions

| | |
|--------------------|---------|
| Product Net Weight | 0.12 kg |
|--------------------|---------|

Container Information

| | |
|------------------------|---------|
| Package Level 1 Units | 1 piece |
| Package Level 1 Width | 110 mm |
| Package Level 1 Height | 60 mm |

| | |
|--------------------------------|---------------|
| Package Level 1 Depth / Length | 140 mm |
| Package Level 1 Gross Weight | 0.15 kg |
| Package Level 1 EAN | 8015644559984 |

Additional Information

| | |
|---------------------------------|----------------------------------|
| Configuration Type | Loose or configurable |
| Current Type | AC/DC |
| Product Main Type | Accessories for Tmax T |
| Product Name | Accessory |
| Product Type | ACC |
| Rated Voltage (U _r) | 24 ... 30 V AC 24 ... 30 V DC |
| Standards | IEC |
| Suitable For | T4, T5, T6 |
| Suitable for Product Class | SACE Tmax T |

Certificates and Declarations (Document Number)

| | |
|-----------------------------------|-----------------|
| Data Sheet, Technical Information | 1SDC210032D0204 |
| Declaration of Conformity - CE | 1SDL000158R137 |
| Instructions and Manuals | 1SDC210033D0202 |

Classifications

| | |
|----------------------------|--|
| ETIM 6 | EC002483 - Switch spool for power circuit breaker |
| ETIM 7 | EC002483 - Switch spool for power circuit breaker |
| Object Classification Code | Q |
| UNSPSC | 39120000 |
| WEEE Category | 5. Small Equipment (No External Dimension More Than 50 cm) |

Categories

Low Voltage Products and Systems → Circuit Breakers → Moulded Case Circuit Breakers → Accessories for Formula DSA
 Low Voltage Products and Systems → Circuit Breakers → Moulded Case Circuit Breakers → Accessories for Tmax T

