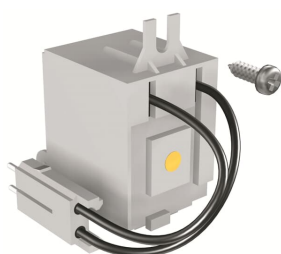


PRODUCT-DETAILS

# SOR-C T4-T5-T6 48...60 Vac/dc

## SOR-C T4-T5-T6 48...60 Vac/dc



### General Information

|                       |   |
|-----------------------|---|
| Extended Product Type | SOR-C T4-T5-T6 48...60 Vac/dc                       |
| Product ID            | 1SDA054871R1  |
| EAN                   | 8015644559991                                       |
| Catalog Description   | SOR-C T4-T5-T6 48...60 Vac/dc                       |
| Long Description      | SHUNT OPENING RELEASE WIRED 48...60V AC-DC T4-T5-T6 |

### Ordering

|                        |               |
|------------------------|---------------|
| E-Number (Finland)     | 3655622       |
| EAN                    | 8015644559991 |
| Minimum Order Quantity | 1 piece       |
| Customs Tariff Number  | 85389099      |

### Dimensions

|                    |         |
|--------------------|---------|
| Product Net Weight | 0.12 kg |
|--------------------|---------|

### Container Information

|                        |         |
|------------------------|---------|
| Package Level 1 Units  | 1 piece |
| Package Level 1 Width  | 110 mm  |
| Package Level 1 Height | 60 mm   |

|                                |               |
|--------------------------------|---------------|
| Package Level 1 Depth / Length | 140 mm        |
| Package Level 1 Gross Weight   | 0.15 kg       |
| Package Level 1 EAN            | 8015644559991 |

### Additional Information

|                                 |                                  |
|---------------------------------|----------------------------------|
| Configuration Type              | Loose or configurable            |
| Current Type                    | AC/DC                            |
| Product Main Type               | Accessories for Tmax T           |
| Product Name                    | Accessory                        |
| Product Type                    | ACC                              |
| Rated Voltage (U <sub>r</sub> ) | 48 ... 60 V AC<br>48 ... 60 V DC |
| Standards                       | IEC                              |
| Suitable For                    | T4, T5, T6                       |
| Suitable for Product Class      | SACE Tmax T                      |

### Certificates and Declarations (Document Number)

|                                   |                 |
|-----------------------------------|-----------------|
| Data Sheet, Technical Information | 1SDC210032D0204 |
| Declaration of Conformity - CE    | 1SDL000158R137  |
| Instructions and Manuals          | 1SDC210033D0202 |

### Classifications

|                            |  |
|----------------------------|--|
| ETIM 6                     | EC002483 - Switch spool for power circuit breaker          |
| ETIM 7                     | EC002483 - Switch spool for power circuit breaker          |
| Object Classification Code | Q  |
| UNSPSC                     | 39120000   |
| WEEE Category              | 5. Small Equipment (No External Dimension More Than 50 cm) |

### Categories

Low Voltage Products and Systems → Circuit Breakers → Moulded Case Circuit Breakers → Accessories for Formula DSA  
 Low Voltage Products and Systems → Circuit Breakers → Moulded Case Circuit Breakers → Accessories for Tmax T

