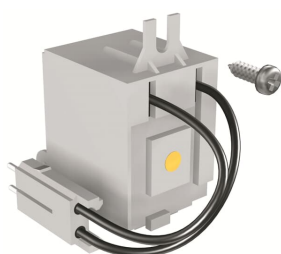


PRODUCT-DETAILS

# SOR-C T4-T5-T6 380...440 Vac

## SOR-C T4-T5-T6 380...440 Vac



### General Information

Extended Product Type	SOR-C T4-T5-T6 380...440 Vac
Product ID	1SDA054874R1
EAN	8015644560027
Catalog Description	SOR-C T4-T5-T6 380...440 Vac
Long Description	SHUNT OPENING RELEASE WIRED 380...440V AC T4-T5-T6

### Ordering

E-Number (Sweden)	3180969
EAN	8015644560027
Minimum Order Quantity	1 piece
Customs Tariff Number	85389099

### Dimensions

Product Net Weight	0.12 kg
--------------------	---------

### Container Information

Package Level 1 Units	1 piece
Package Level 1 Width	110 mm
Package Level 1 Height	60 mm

Package Level 1 Depth / Length	140 mm
Package Level 1 Gross Weight	0.15 kg
Package Level 1 EAN	8015644560027

### Additional Information

Configuration Type	Loose or configurable
Current Type	AC
Product Main Type	Accessories for Tmax T
Product Name	Accessory
Product Type	ACC
Rated Voltage (U <sub>r</sub> )	380 ... 440 V AC
Standards	IEC
Suitable For	T4, T5, T6
Suitable for Product Class	SACE Tmax T

### Certificates and Declarations (Document Number)

Data Sheet, Technical Information	1SDC210015D0201
Declaration of Conformity - CE	1SDL000158R137
Environmental Information	1SDC210015D0201
Instructions and Manuals	1SDC210015D0201

### Classifications

ETIM 6	EC002483 - Switch spool for power circuit breaker
ETIM 7	EC002483 - Switch spool for power circuit breaker
Object Classification Code	Q
UNSPSC	39120000
WEEE Category	5. Small Equipment (No External Dimension More Than 50 cm)

### Categories

Low Voltage Products and Systems → Circuit Breakers → Moulded Case Circuit Breakers → Accessories for Formula DSA

Low Voltage Products and Systems → Circuit Breakers → Moulded Case Circuit Breakers → Accessories for Tmax T

