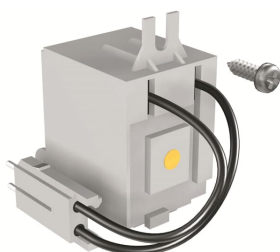


PRODUCT-DETAILS

SOR-C A1-A2 220-240Vac-220-250Vdc

SOR-C A1-A2 220-240Vac-220-250Vdc



General Information

Extended Product Type	SOR-C A1-A2 220-240Vac-220-250Vdc
Product ID	1SDA066137R1
EAN	8015644691325
Catalog Description	SOR-C A1-A2 220-240Vac-220-250Vdc
Long Description	SHUNT OPENING RELEASE WIRED 220...240V AC-220...250V DC A1-A2

Ordering

EAN	8015644691325
Minimum Order Quantity	1 piece
Customs Tariff Number	85389099

Dimensions

Product Net Weight	0.109 kg
--------------------	----------

Container Information

Package Level 1 Units	1 piece
Package Level 1 Gross Weight	0.115 kg
Package Level 1 EAN	8015644691325

Additional Information

Configuration Type	Loose or configurable
Current Type	AC/DC
Product Main Type	Accessories for FORMULA
Product Name	Accessory
Product Type	ACC
Rated Voltage (U _r)	220 ... 240 V AC 220 ... 250 V DC
Standards	IEC
Suitable For	A1, A2

Certificates and Declarations (Document Number)

Data Sheet, Technical Information	9AKK105713A5945
Declaration of Conformity - CE	1SDL000158R137
Instructions and Manuals	1SDC210032D0204

Classifications

ETIM 6	EC002483 - Switch spool for power circuit breaker
ETIM 7	EC002483 - Switch spool for power circuit breaker
Object Classification Code	Q
WEEE Category	5. Small Equipment (No External Dimension More Than 50 cm)

Categories

Low Voltage Products and Systems → Circuit Breakers → Moulded Case Circuit Breakers → Accessories for Formula DSA

