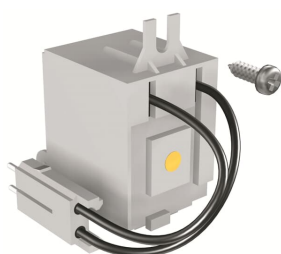


PRODUCT-DETAILS

SOR-C T4-T5-T6 220..240Vac - 220..250Vdc

SOR-C T4-T5-T6 220..240Vac - 220..250Vdc



General Information

Extended Product Type	SOR-C T4-T5-T6 220..240Vac - 220..250Vdc
Product ID	1SDA054873R1
EAN	8015644560010
Catalog Description	SOR-C T4-T5-T6 220..240Vac - 220..250Vdc
Long Description	SHUNT OPENING RELEASE WIRED 220...240V AC-220...250V DC T4-T5-T6

Ordering

E-Number (Finland)	3655624
E-Number (Sweden)	3180968
EAN	8015644560010
Minimum Order Quantity	1 piece
Customs Tariff Number	85362090

Dimensions

Product Net Weight	0.12 kg
--------------------	---------

Container Information

Package Level 1 Units	1 piece
Package Level 1 Width	110 mm

Package Level 1 Height	60 mm
Package Level 1 Depth / Length	140 mm
Package Level 1 Gross Weight	0.15 kg
Package Level 1 EAN	8015644560010

Additional Information

Configuration Type	Loose or configurable
Current Type	AC/DC
Product Main Type	Accessories for Tmax T
Product Name	Accessory
Product Type	ACC
Rated Voltage (U _r)	220 ... 240 V AC 220 ... 250 V DC
Standards	IEC
Suitable For	T4, T5, T6
Suitable for Product Class	SACE Tmax T

Certificates and Declarations (Document Number)

Data Sheet, Technical Information	1SDC210015D0201
Declaration of Conformity - CE	1SDL000158R137
Environmental Information	1SDC210015D0201
Instructions and Manuals	1SDC210015D0201

Classifications

ETIM 6	EC002483 - Switch spool for power circuit breaker
ETIM 7	EC002483 - Switch spool for power circuit breaker
Object Classification Code	Q
UNSPSC	39120000
WEEE Category	5. Small Equipment (No External Dimension More Than 50 cm)

Categories

Low Voltage Products and Systems → Circuit Breakers → Moulded Case Circuit Breakers → Accessories for Formula DSA
 Low Voltage Products and Systems → Circuit Breakers → Moulded Case Circuit Breakers → Accessories for Tmax T

