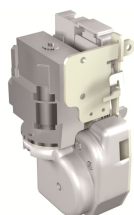


---

PRODUCT-DETAILS

**M E1.2 48-60 VAC/DC**

M E1.2 48-60 VAC/DC




---

**General Information**

Extended Product Type	M E1.2 48-60 VAC/DC
Product ID	1SDA073709R1
EAN	8015644776428
Catalog Description	M E1.2 48-60 VAC/DC
Long Description	GEARED MOTOR DEVICE 48...60V AC-DC E1.2

---

**Ordering**

EAN	8015644776428
Minimum Order Quantity	1 piece
Customs Tariff Number	85389099

---

**Dimensions**

Product Net Weight	1 kg
--------------------	------

---

**Container Information**

Package Level 1 EAN	8015644776428
---------------------	---------------

---

## Environmental

---

RoHS Status Following EU Directive 2011/65/EU and Amendment 2015/863 July 22, 2019

---



---

## Additional Information

---

Configuration Type	Loose or configurable
Current Type	AC/DC
Product Main Type	Accessories for Emax 2
Product Name	Accessory
Product Type	Accessory
Rated Voltage (U <sub>r</sub> )	48...60 V
Standards	IEC
Suitable For	E1.2
Suitable for Product Class	SACE Emax 2

---



---

## Certificates and Declarations (Document Number)

---

Data Sheet, Technical Information	1SDC200023D0204
Declaration of Conformity - CE	1SDL000165R0019
Instructions and Manuals	1SDH000999R0609

---



---

## Classifications

---

ETIM 6	EC001030 - Motor operator for power circuit-breaker
ETIM 7	EC001030 - Motor operator for power circuit-breaker
Object Classification Code	Q
WEEE Category	5. Small Equipment (No External Dimension More Than 50 cm)

---



---

## Categories

---

Low Voltage Products and Systems → Circuit Breakers → Air Circuit Breakers → Accessories for Emax 2

