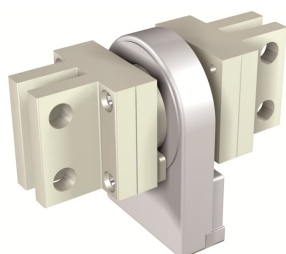


PRODUCT-DETAILS

EXT CS E4.2 4000A - E6.2 N 50%

EXT CS E4.2 4000A - E6.2 N 50%



General Information

| | |
|-----------------------|---|
| Extended Product Type | EXT CS E4.2 4000A - E6.2 N 50% |
| Product ID | 1SDA073739R1 |
| EAN | 8015644776725 |
| Catalog Description | EXT CS E4.2 4000A - E6.2 N 50% |
| Long Description | CURRENT SENSOR FOR EXTERNAL NEUTRAL InN=50% E4.2 4000A - E6.2 |

Ordering

| | |
|------------------------|---------------|
| EAN | 8015644776725 |
| Minimum Order Quantity | 1 piece |
| Customs Tariff Number | 85389099 |

Dimensions

| | |
|--------------------|------|
| Product Net Weight | 1 kg |
|--------------------|------|

Container Information

| | |
|---------------------|---------------|
| Package Level 1 EAN | 8015644776725 |
|---------------------|---------------|

Environmental

| | |
|-------------|--|
| RoHS Status | Following EU Directive 2011/65/EU and Amendment 2015/863 July 22, 2019 |
|-------------|--|

Additional Information

| | |
|----------------------------|------------------------|
| Configuration Type | Loose or configurable |
| Product Main Type | Accessories for Emax 2 |
| Product Name | Accessory |
| Product Type | Accessory |
| Standards | IEC |
| Suitable For | E4.2, E6.2 |
| Suitable for Product Class | SACE Emax 2 |

Certificates and Declarations (Document Number)

| | |
|-----------------------------------|------------------------------------|
| Data Sheet, Technical Information | 1SDC200023D0204 |
| Declaration of Conformity - CE | 1SDL000165R0021 1SDL000165R0022 |
| Instructions and Manuals | 1SDH001000R0515 |

Classifications

| | |
|----------------------------|--|
| ETIM 6 | EC002498 - Accessories for low-voltage switch technology |
| ETIM 7 | EC002498 - Accessories for low-voltage switch technology |
| Object Classification Code | Q |
| WEEE Category | 5. Small Equipment (No External Dimension More Than 50 cm) |

Categories

Low Voltage Products and Systems → Circuit Breakers → Air Circuit Breakers → Accessories for Emax 2

