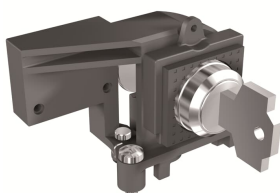


---

PRODUCT-DETAILS

## KLC-D Key lock open E2.2...E6.2

### KLC-D Key lock open E2.2...E6.2



---

#### General Information

Extended Product Type	KLC-D Key lock open E2.2...E6.2
Product ID	1SDA073791R1
EAN	8015644777241
Catalog Description	KLC-D Key lock open E2.2...E6.2
Long Description	KEY LOCK SEVERAL IN OPEN FOR 1 C.BREAKER E2.2...E6.2

---

#### Ordering

EAN	8015644777241
Minimum Order Quantity	1 piece
Customs Tariff Number	85389099

---

#### Dimensions

Product Net Weight	1 kg
--------------------	------

---

#### Container Information

Package Level 1 EAN	8015644777241
---------------------	---------------

---

## Environmental

---

RoHS Status	Following EU Directive 2011/65/EU and Amendment 2015/863 July 22, 2019
-------------	--

---



---

## Additional Information

---

Configuration Type	Loose or configurable
Product Main Type	Accessories for Emax 2
Product Name	Accessory
Product Type	Accessory
Standards	IEC
Suitable For	E2.2, E4.2, E6.2
Suitable for Product Class	SACE Emax 2

---



---

## Certificates and Declarations (Document Number)

---

Data Sheet, Technical Information	1SDC200023D0204
Declaration of Conformity - CE	1SDL000165R0020 1SDL000165R0021 1SDL000165R0022
Instructions and Manuals	1SDH001000R0702

---



---

## Classifications

---

ETIM 6	EC002498 - Accessories for low-voltage switch technology
ETIM 7	EC002498 - Accessories for low-voltage switch technology
Object Classification Code	Q
WEEE Category	5. Small Equipment (No External Dimension More Than 50 cm)

---



---

## Categories

---

Low Voltage Products and Systems → Circuit Breakers → Air Circuit Breakers → Accessories for Emax 2

