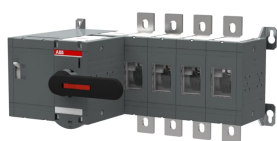


PRODUCT-DETAILS

# OTM800E4M230C

## OTM800E4M230C MOTORIZED SWITCH



### General Information

Extended Product Type	OTM800E4M230C
Product ID	1SCA115356R1001
EAN	6417019477268
Catalog Description	OTM800E4M230C MOTORIZED SWITCH
Long Description	4-pole, motor operated, base mounted switch-disconnector with handle for manual operation, terminal bolt kit, handle and spare fuse storage clip and male connector for control circuit

### Ordering

Minimum Order Quantity	1 piece
Customs Tariff Number	85365080
Country of Origin	Finland (FI)

### Popular Downloads

Data Sheet, Technical Information	1SCC301020C0201
Instructions and Manuals	1SCC303006M0205

---

**Dimensions**


---

Product Net Width	480 mm
Product Net Height	250 mm
Product Net Depth / Length	312 mm
Product Net Weight	14.9 kg

---

**Technical**


---

Rated Operational Current AC-21A ( $I_e$ )	(380 ... 415 V) 800 A (500 V) 800 A (690 V) 800 A (1000 V AC) 800 A
Rated Operational Current AC-22A ( $I_e$ )	(380 ... 415 V) 800 A (500 V) 800 A (690 V) 800 A
Rated Operational Current AC-23A ( $I_e$ )	(380 ... 415 V) 800 A (500 V) 800 A (690 V) 800 A
Rated Operational Power AC-23A ( $P_e$ )	(220 ... 240 V) 250 kW (400 ... 415 V) 450 kW (500 V) 560 kW (690 V) 800 kW
Conventional Free-air Thermal Current ( $I_{th}$ )	q = 40 °C 800 A
Conventional Thermal Current ( $I_{the}$ )	Fully Enclosed 800 A
Rated Impulse Withstand Voltage ( $U_{imp}$ )	12 kV
Rated Insulation Voltage ( $U_i$ )	acc. to IEC/EN 60664-1 1000 V
Rated Operational Voltage	Main Circuit 1000 V
Rated Short-Circuit Making Capacity ( $I_{cm}$ )	(690 V) 80 kA
Rated Short-time Withstand Current ( $I_{cw}$ )	for 1 s 20 kA
Motor Operational Voltage	220 ... 240 V AC
Power Loss	at Rated Operating Conditions per Pole 40 W
Pollution Degree	3
Handle Color	Black
Handle Type	Direct mounted handle
Fourth Pole Position	Right Side
Fourth Pole Type	Switched - Simultaneous Function
Switches Operating Mechanism	Mechanism at the End of the Switch
Distance Between Phases	Standard
Position of Line Terminals	Top In - Bottom Out
Operating Mode	Front operated
Standards	IEC 60947-3
Special Functions	No
Mounting Type	Base mounting
Number of Poles	4

Degree of Protection	Front IP00
Terminal Type	Lug terminals
Tightening Torque	acc. IEC 60947-1 50...75 N·m
Mechanical Durability	10000
Lock Type	Yes

---

## Environmental

RoHS Status	Following EU Directive 2011/65/EU
-------------	-----------------------------------

---

## Certificates and Declarations (Document Number)

Declaration of Conformity - CE	1SCC301199D0202
Instructions and Manuals	1SCC303006M0205
RoHS Information	1SCC303036D0202

---

## Container Information

Package Level 1 Units	box 1 piece
Package Level 1 Width	310 mm
Package Level 1 Depth / Length	560 mm
Package Level 1 Height	320 mm
Package Level 1 Gross Weight	18.9 kg
Package Level 1 EAN	6417019477268

---

## Classifications

Object Classification Code	Q
ETIM 5	EC000216 - Switch disconnecter
ETIM 6	EC000216 - Switch disconnecter
ETIM 7	EC000216 - Switch disconnecter
ETIM 8	EC000216 - Switch disconnecter
WEEE Category	5. Small Equipment (No External Dimension More Than 50 cm)
E-Number (Finland)	3638153

---

## Categories

Low Voltage Products and Systems → Switches → Motorized Switch-Disconnectors

