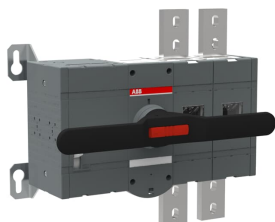


PRODUCT-DETAILS

OTM1600E3M230C

OTM1600E3M230C MOTORIZED SWITCH



General Information

Extended Product Type	OTM1600E3M230C
Product ID	1SCA115366R1001
EAN	6417019477367
Catalog Description	OTM1600E3M230C MOTORIZED SWITCH
Long Description	3-pole, motor operated, base mounted switch-disconnector with handle for manual operation, terminal bolt kit, handle and spare fuse storage clip and male connector for control circuit

Ordering

Minimum Order Quantity	1 piece
Customs Tariff Number	85365080
Country of Origin	Finland (FI)

Popular Downloads

Data Sheet, Technical Information	1SCC301020C0201
Instructions and Manuals	1SCC303006M0205

Dimensions

Product Net Width	506.5 mm
Product Net Height	372 mm
Product Net Depth / Length	153 mm
Product Net Weight	26 kg

Technical

Rated Operational Current AC-21A (I_e)	(380 ... 415 V) 1600 A (500 V) 1600 A (690 V) 1600 A (1000 V AC) 1600 A
Rated Operational Current AC-22A (I_e)	(380 ... 415 V) 1600 A (500 V) 1600 A (690 V) 1600 A
Rated Operational Current AC-23A (I_e)	(380 ... 415 V) 1250 A (500 V) 1250 A (690 V) 1250 A
Rated Operational Power AC-23A (P_e)	(400 ... 415 V) 710 kW (500 V) 900 kW (690 V) 1200 kW
Conventional Free-air Thermal Current (I_{th})	q = 40 °C 1600 A
Conventional Thermal Current (I_{the})	Fully Enclosed 1600 A
Rated Impulse Withstand Voltage (U_{imp})	12 kV
Rated Insulation Voltage (U_i)	acc. to IEC/EN 60664-1 1000 V
Rated Operational Voltage	Main Circuit 1000 V
Rated Short-Circuit Making Capacity (I_{cm})	(690 V) 110 kA
Rated Short-time Withstand Current (I_{cw})	for 1 s 50 kA
Motor Operational Voltage	220 ... 240 V AC
Power Loss	at Rated Operating Conditions per Pole 48 W
Pollution Degree	3
Handle Color	Black
Handle Type	Direct mounted handle
Switches Operating Mechanism	Mechanism at the End of the Switch
Distance Between Phases	Standard
Position of Line Terminals	Top In - Bottom Out
Operating Mode	Front operated
Standards	IEC 60947-3
Special Functions	No
Mounting Type	Base mounting
Number of Poles	3
Degree of Protection	Front IP00
Terminal Type	Lug terminals

Tightening Torque	acc. IEC 60947-1 50...75 N·m
Mechanical Durability	6000
Lock Type	Yes

Environmental

RoHS Status	Following EU Directive 2011/65/EU
-------------	-----------------------------------

Certificates and Declarations (Document Number)

Declaration of Conformity - CE	1SCC301213D2702
Instructions and Manuals	1SCC303006M0205
RoHS Information	1SCC301213D2702

Container Information

Package Level 1 Units	box 1 piece
Package Level 1 Width	407 mm 16.02 in
Package Level 1 Depth / Length	619 mm 24.37 in
Package Level 1 Height	190 mm 7.48 in
Package Level 1 Gross Weight	28 kg 13 lb
Package Level 1 EAN	6417019477367

Classifications

Object Classification Code	Q
ETIM 5	EC000216 - Switch disconnecter
ETIM 6	EC000216 - Switch disconnecter
ETIM 7	EC000216 - Switch disconnecter
ETIM 8	EC000216 - Switch disconnecter
WEEE Category	4. Large Equipment (Any External Dimension More Than 50 cm)

Categories

Low Voltage Products and Systems → Switches → Motorized Switch-Disconnectors

